

Steps

- 1 | **Remove cable cover plate**
- 2 | Connect USB cable
- 3 | Snap off Magic Box spacer
- 4 | Reattach cover



Step 1

Remove cable cover plate

With the terminal power unplugged, remove the plate on the underside covering the cables.

Steps

- 1 | Remove cable cover plate
- 2 | **Connect USB cable**
- 3 | Snap off Magic Box spacer
- 4 | Reattach cover



Step 2

Connect USB cable

Connect the USB cable from the PIN pad to the USB Host port.

Steps

- 1 | Remove cable cover plate
- 2 | Connect USB cable
- 3 | **Snap off Magic Box spacer**
- 4 | Reattach cover



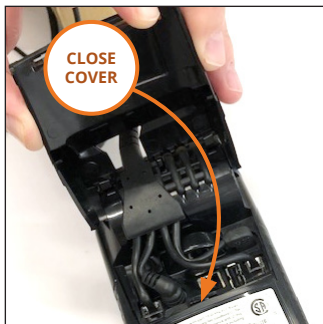
Step 3

Snap off Magic Box spacer

Snap off one of the spacers on the Magic Box cable to make room under the cover for the new cable.

Steps

- 1 | Remove cable cover plate
- 2 | Connect USB cable
- 3 | Snap off Magic Box spacer
- 4 | **Reattach cover**



Step 4

Reattach cover

Reattach cover and power on the machine.